



SUNPOWER TECHNOLOGY CORP.
 33485 Western Ave., Union City, CA 94587, United States of America
 TEL: (510) 489-5088 FAX: (510) 489-8966
 http://www.sunpower-usa.com
 E-mail: sales@sunpower-usa.com

SPL-075-D1

75W , Dual Output
 Open Frame Power supply
 LCD Panel PC Power supply



178 x 50.8 x 39.5 mm
 7.00 x 2.00 x 1.56 inch



Features:

- * Light weight, compact size
- * Built in EMI filter, low ripple noise
- * Over voltage, over load & short circuit protection
- * 100% full load burn-in test
- * UL, cUL, TUV, CB, CE standard
- * 2 years warranty

Specification:

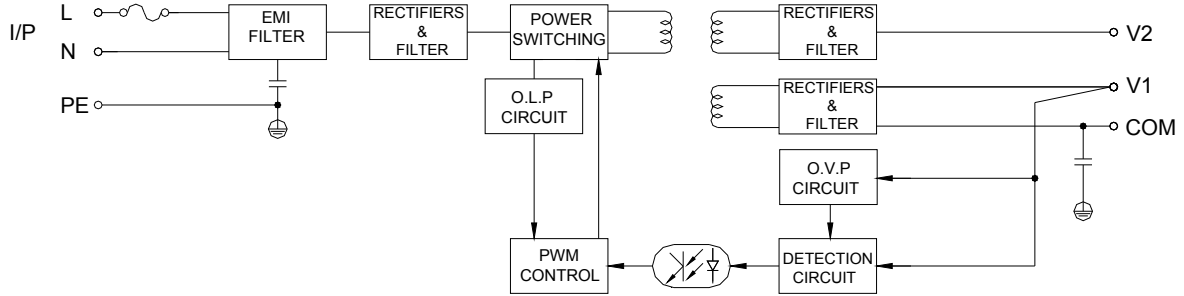
| | | SPL-075-D1 | |
|-------------|---|---|-------|
| INPUT | MODEL No. | SPL-075-D1 | |
| | Voltage | 85V ~ 264VAC universal full range or 120V ~ 375VDC. | |
| | Frequency | 47 ----- 63 Hz | |
| | Current | <1.9A @ 100V, full load condition | |
| | Inrush Current | <30A@115V , <50A@230V AC input, Cold start at 25°C ambient | |
| | Leakage Current | <1.5mA@264V AC input | |
| OUTPUT | Output | V1 | V2 |
| | Voltage | 5V | 12V |
| | Min Load | 0.5A | 0.3A |
| | Max Load | 12A | 2A |
| | Peak Load ⑥ | 15A | 4A |
| | Output Tolerance ② | ±3% | ±5% |
| | Ripple Noise MAX. ③ | 70mV | 120mV |
| | Efficiency (TYP.) | 76% | |
| Output MAX. | 75W | | |
| PROTECTION | Over Voltage | 5.8~7.0V | ----- |
| | Over Load & Short Circuit | Hiccup and recovers automatically after the fault is removed. When power supply over 105%~ 150% max load or short circuit acted, power supply will go into hiccup mode and recover automatically after the fault is removed. | |
| ELEC. CHAR. | Rise time | <20mS | |
| | Hold up time | >80mS@230V | |
| ENVIRONMENT | Temperature ④ | Operating: -10 ~ 70°C ; De-rating: 45 ~ 70°C : 2.5%/°C ; Storage: -20 ~ +85°C | |
| | Humidity | Operating: 20% ~ 90% RH (non condensing); Storage: 10% ~ 95% RH (non condensing) | |
| SAFETY | Withstand voltage | I/P-O/P:3KVAC, I/P-PE:1.5KVAC, O/P-PE: 0.5KVDC, 1minute | |
| | Isolation resistance | I/P-O/P, I/P-PE, O/P-PE > 100MΩ/500VDC at 25°C / 70% RH | |
| | Safety standard | UL 60950-1 1 st , CSA C22.2 No. 60950-1- 03 1 st , TUV EN 60950-1:2001+A11, IEC 60950-1, standard | |
| EMC | EMI | EN 55022 CLASS B · FCC CFR 47 PART 15 CLASS B · CNS 13438 CLASS B. Compliance to EN61000-3-2 CLASS A, EN61000-3-3, | |
| | EMS | EN 55024 : EN 61000-4-2,3,4,5,6,8,11 | |
| OTHERS | Cooling | Natural cooling | |
| | M.T.B.F. | 308 K hours | |
| | Dimension | 178 x 50.8 x 39.5 mm (L*W*H) | |
| | Packing | N.W.:0.4Kg / 1pc; 48pcs/ 1.44 CUFT / 1 CTN | |
| NOTE | ① All measurements which not mentioned are based on 230VAC input, output Max at ambient 25°C / 70%RH | | |
| | ② Output tolerance included set up voltage, line regulation and load regulation. The regulation is measured between 20%-100% max load of each output, Total output t must under output Max . | | |
| | ③ Ripple & noise are measured at 100~254VAC input with 0~50°C condition and 20MHz of bandwidth by using a 10" ~15" twisted pair-wire terminated with a 0.1uF & a 47uF parallel capacitor. | | |
| | ④ The operating temperature shall follow the de-rating curve in spec The output load may be requested for decreasing as de-rating curve in spec when low input voltage is under 100VAC.. | | |
| | ⑤ The power supply is considered a component of end-equipment. The end-equipment must be re-confirmed whether comply with EMC directives. | | |
| | ⑥ 10% duty cycle maximum within every 30 seconds. | | |



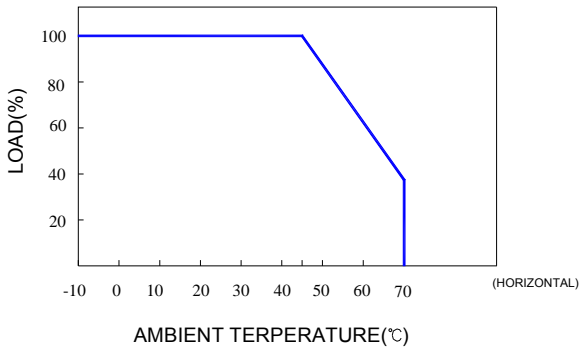
SUNPOWER TECHNOLOGY CORP.
 33485 Western Ave., Union City, CA 94587, United States of America
 TEL: (510) 489-5088 FAX: (510) 489-8966
 http://www.sunpower-usa.com
 E-mail: sales@sunpower-usa.com

SPL-075-D1

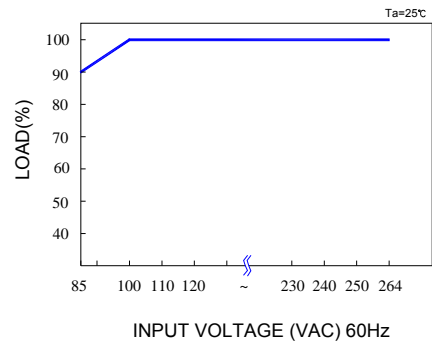
Block Diagram : UD1



De-rating Curve :

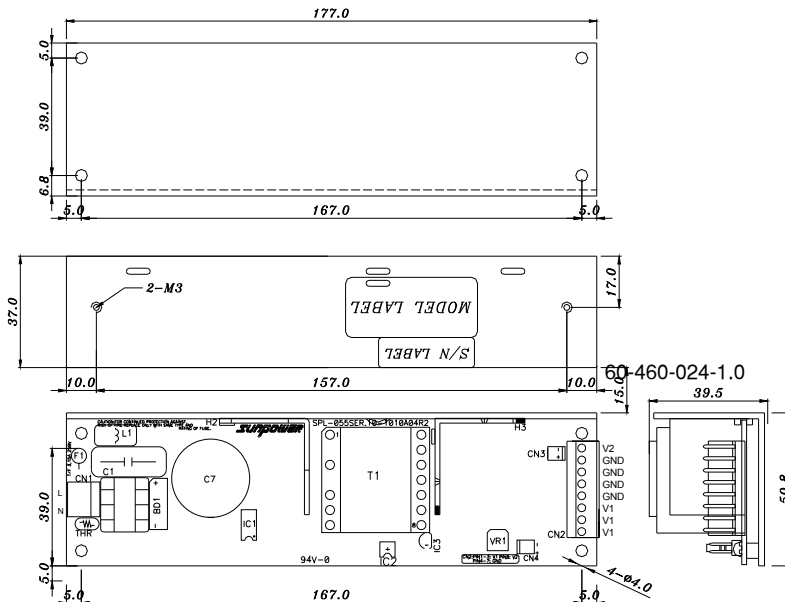


Output De-rating Vs Input Voltage :



Dimension:

(Unit: mm)



NOTES:

- THEADER : I/P: CN1, 3P P:3.96mm(P2 CUT), MOLEX 5277-02A or COMPATIBLE
- O/P: CN2, 8P P:3.96mm, MOLEX 5273-08A or COMPATIBLE
- FAN: CN3, 2P P2.54mm, MOLEX 5045-02A or COMPATIBLE
- LED: CN4, 2P P2.54mm, MOLEX 5045-02A or COMPATIBLE